

Holiday rental: Chalet 13.

General

Type: Cottage / bungalow
Name: Chalet 13.
Location: St. Georgen-murau
Region: Styria
Country: Austria
Persons: 5 - 7
Bedrooms: 3



Description & house plan

This attractive holiday resort, situated between Murau and St. Lorenz, is surrounded by a magnificent landscape and has a direct view of Kreischberg mountain. Peaceful, yet centrally located, this place will provide all the peace and harmony you need. There is a restaurant and supermarket within walking distance, and the 18-hole golf course is only 300m away. You can learn to horseback ride or just improve your skills with the help of a professional instructor in Olachgut, just 1 km away. If you feel more comfortable on a bike, feel free to explore the tracks along the Mur, or set down your bike and climb to 2500m. The community of St. Georgen has a variety of leisure-time options, as well as relaxation and tranquility. Must see places: the largest unsupported wooden bridge in Europe (connects St. Georgen and St. Lorenzen) is a feat of Steyr's timber technology.

Comfortable holiday house of 102m²; suitable for up to 7 persons; with winter garden. On the ground level there is a big living room with a couch, gas fireplace, dining table, flat screen satellite TV, DVD and CD player and a large terrace complete with garden furniture. The kitchen opens onto the living room and is fully equipped including a dishwasher, fridge, small freezer, 4-plate ceramic glass cook top, toaster, [filter] coffeemaker, microwave, water jug, table wear, pots and pans and glassware. Furthermore, the house features a vestibule, shower, toilet, sauna and storage room with a dryer for your ski boots. There is also a washing machine, clothes dryer, iron and drying board for your use. On the first floor you will find a bedroom for 3 persons (1 double bed and 1 single bed), 2 double bedrooms, a bathroom, toilet and balcony.

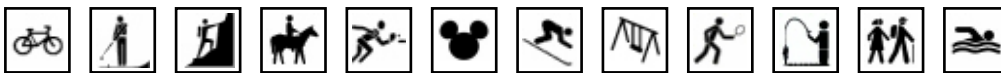


Surroundings & activities

Murau is a small medieval town that invites you to come for a cultural visit or to do a bit of shopping. This renowned beer town warmly welcomes every visitor. Murau is situated just 2 km away. Here you will find a fitness center, swimming pool with spa, numerous pubs and restaurants and an abundance of shopping facilities. Don't miss the modern indoor swimming center with its giant slides, pool for children, saunas, solarium, massages and special facial treatments, pedicure services and light therapy facilities. The small landscaped lake at La#223;niz has a small fitness track, playground, slide, an ecological exhibition area and a rustic restaurant with a fantastic terrace. Asphalt curling, football, ping pong, bowling alley, giant chess field and Foosball #8211; there are plenty of options to choose from for your sports odyssey. The natural lake of Murau is the next in line when it comes to splashing action: it features a springboard and water slide for a refreshing adventure. If you're tired of all the swimming, stop by the local restaurant or hit the beach volleyball field or ping pong tables. On Kreischberg mountain you can hitch a ride on the chair lift (even in summer) and above the forest edge there are magnificent hiking trails. A truly special attraction is the Murtalbahn train, where you can share the experience of being a train engineer.

Holiday rental: Chalet 13.

Distance to public swimming pool: 2 km
Distance to playgarden: ter plaatse
Distance to amusement park: 2 km
Distance to skiing possibilities: 2 km
Distance to tennis: 2 km
Distance to golf: 500 m
Distance to horseriding: 1 km
Distance to bike rental: 4 km
Distance to wellness centre: 2 km
Distance to shopping: 2 km
Distance to supermarket: 2 km
Distance to restaurant: 250 m
Distance to airport: 90 km
Distance to public transport: 50 m



Prices & periods

Deposit is: €200
End cleaning: €60

Period	Price/week
Low season	921
High season	1088

Information & reservations

For more information and reservations please contact:

Contact:

Pictures



Holiday rental: Chalet 13.

Foto's

